

Comédie de Genève

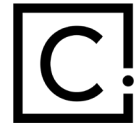
Technical Rider

MODULAR AUDITORIUM

Technical Director
Yves Fröhle
T. +41 22 809 60 81
yfrohle@comedie.ch

COMÉDIE DE GENÈVE
www.comedie.ch

TECHNICAL TEAM



TECHNICAL DIRECTION

Technical director
FRÖHLE Yves
+4122 809 60 81 yfrohle@comedie.ch

Deputy technical directors
PROUT Terence
+4122 809 60 82 tprout@comedie.ch

BALLERIO William
+4122 809 60 87 wballerio@comedie.ch

Assistants to the technical direct.
BLANC Margaux
+4122 809 60 88 mblanc@comedie.ch

LABBE Margaret
+4122 708 49 46 mlabbe@comedie.ch

STAGE

BRUNISHOLZ Philippe
+4122 839 60 87 pbrunisholz@comedie.ch

GASTALDELLO Mateo
+4122 708 49 31 mgastaldello@comedie.ch

OBERSON Valérie
+4122 839 60 89 voberson@comedie.ch

RAMOS LOPES Frederico
+4122 708 49 30 framoslopes@comedie.ch

SARRAILH Sylvain
+4122 708 49 87 ssarrailh@comedie.ch

RIGGING

MARTIN Benoit
+4122 708 49 27 bmartin@comedie.ch

MÉGROZ Ivan
+4122 809 60 84 imegroz@comedie.ch

MILLO Youri
+4122 708 49 28 ymillo@comedie.ch

LIGHTING

BRYAND Alexandre
+4122 708 49 32 abryand@comedie.ch

DEPIERRE Bastien
+4122 809 60 71 bdepierre@comedie.ch

LÉVI Serge
+4122 708 49 34 slevi@comedie.ch

PERRE Nelly
+4122 708 49 33 nperre@comedie.ch

REBOU Thomas
+4122 708 49 35 trebou@comedie.ch

VIALA Arnaud
+4122 708 49 91 aviala@comedie.ch

SOUND

MUGEL Charles
+4122 708 49 36 cmugel@comedie.ch

SAILLET Benoit
+4122 708 49 37 bsaillet@comedie.ch

VAZEILLE Alizée
+4122 708 49 86 avazeille@comedie.ch

VICQ Benjamin
+4122 708 49 38 bvicq@comedie.ch

NETWORK

HATT Robert
+4122 708 49 90 rhatt@comedie.ch

VIDEO

BOREL Gilles
+4122 708 49 48 gborel@comedie.ch

DLIOUI Houssein
+4122 708 49 47 hdlioui@comedie.ch

COSTUMES

MOBERG Ingrid
+4122 809 60 77 imoberg@comedie.ch

DUBOIS Karine
+4122 708 49 40 kdubois@comedie.ch

DECOR

Head of scenery production
PERRIER Gilles
+4122 708 49 42 gperrier@comedie.ch

Locksmith
BERTRAND Hugo
+4122 708 49 44 hbertrand@comedie.ch

Scenery maker
CRUCHON Alain
+4122 708 49 45 acruchon@comedie.ch

BOISSEAU Balthazar
+4122 808 07 89 bboisseau@comedie.ch



© Régis Golay

ACCES



Staff and artists' door :	Promenade Louise Boulaz 4 - 1207 Geneva
Loading bay :	Promenade Louise Boulaz 2 - 1207 Geneva (via rue de Chamonix 3)
Public entrance :	Esplanade Alice Bailly 1 – 1207 Geneva
Lorry parking :	It is not possible to park at the theatre
Parking options :	Geneva Airport paid parking P43 - 1215 Le Grand-Saconnex Rue Jacques Gosselin – 1227 Carouge Route des Jeunes (opposite la Praille Stadium) Geneva / Carouge

SCENERY ACCESS

To enter the loading bay, call General Services on +4122 708 49 11 or your contact at the Comédie so that the bollards can be lowered.

Please let us know the date and time of the lorry's arrival beforehand.

The bay can only be accessed by reversing in.



©Charles Mugel

BAY

Dimensions :

Bay : L 4m x H 1m

Lorry access door : L 4.10m x H 4.25m

Door to access corridor : L 4m x H 3.30m

OUI



©Charles Mugel

CORRIDOR

Dimensions : L 5m x H 3.70m

Maximum load : 750kg/m²

AUDITORIUM DOORS

Dimensions : L 4m x H 3.30m

Maximum load: 750kg/m²

Scenery access is on the same level as the stage



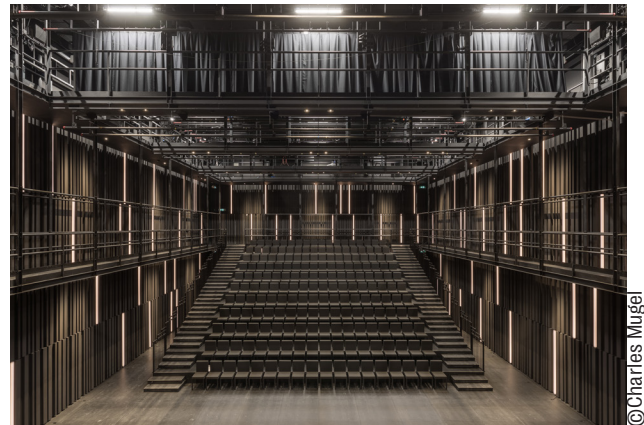
©Charles Mugel

CAPACITY AND SEATING

Single-storey auditorium with variable capacity of up to 198 seats. Seating stands can be entirely disassembled.

Possible configurations as follows :

- Frontal : 198 seats
- Traverse: stage right-left or upstage- downstage
- Promenade: up to 499 standing places.



CONTROL BOOTH

Sound, light, and video technicians' positions are mobile and can be adapted to the needs of the set



STAGE

With bleachers setup in 198 configuration, the stage area is as follows: Width: 17m

Depth: 12m Floor surface area: 204 m²

Maximum load: 750 kg/m²

Without seating stands:

Width: 17m

Depth: 26m

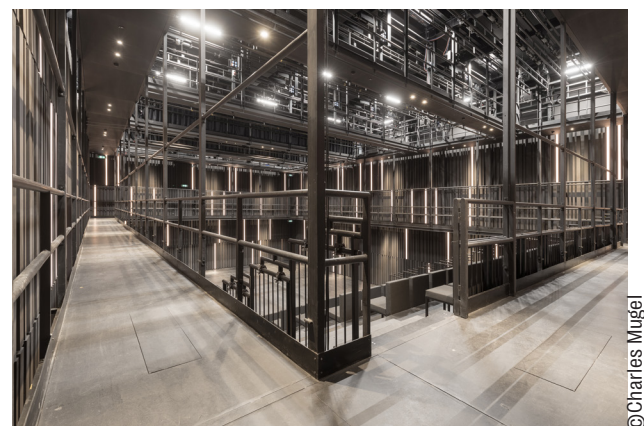
Floor surface area: 442m²

Height to ceiling: 10m

Public walkway at 4.40m

Technicians' walkway at 8.80m

Both walkways go all the way around the auditorium. Les deux passerelles font le tour complet de la salle.



FLYING

28 350kg motorised battens distributed throughout the space 60cm apart
Variable speed: max 1.2m/s
Length : 12.30m
Height : 10m10

4 additional 350kg SQUALIFT battens of variable speed (max 0.6m/s) are installed under the two technical walkways above the stage area, when in proscenium setting.

Length : 12.30m
Height : 8.10m

Option to add another 4 150kg hoists
Variable speed : max 1.2m/s
Max height : 9,95m



© Charles Muegel

DESSOUS

The trap room does not cover the whole stage.
Height to stage: 3.30m

Central part of stage can be converted into trapdoor:
width 11.60m / depth 21.40m / height 3.30m / up to -1m.

Height adjustable in 5cm increments.
Size of trapdoors: 1.20m x 1.20m
Stage cuts run downstage upstage towards the



© Régis Colay

IMPORTANT TECHNICAL INFORMATION

In order to comply with the Genevan authorities' safety standards, complete blackout is not permitted on stage and in the auditorium. Emergency exit lighting cannot be masked.

Scenery on stage must be made out of relatively inflammable material (5.1 on the flammability scale). Solid wood furniture and constructions are permitted..

All scenery and fabric made outside of Switzerland must be fireproofed in line with European standards.

If any pyrotechnics are to be used, a request must be filed with the competent department no less than 30 days before the performances. None of our technicians are trained in pyrotechnics.



ELECTRICAL HOISTS

Depending on your needs, extra motorised battens can be added after our agreement is obtained in order to create more hanging points.

Please be aware that our list of motors is for information purposes only and does not indicate whether they will be available:

- 8 x GIS chain length: 20m, CMU 250kg
- 3 x GISS motor control units with extensions: 5m, 20m, 30m

TABS

GERRIETS CYC

- 1x creamy white opera cyc
- H 8m x L 12m
- 1x grey studio cyc
- H 8m x L 12m

SCHLEGEL

- Curia 150*
- 100% cotton*
- 580 gr/m2*

Masking curtains

- 6x H 1m x L 4m
- 6x H 1m x L 6m
- 3x H 2m x L 12.30m
- 3x H 2m x L 12.30m

Leg-style drops

- 8x H 8m x L 2.60m
- 6x H 8m x L 2m

Tabs

- 2x H 9m x L 7.50m

Backdrop

- 1x H 9m x L 12.30m

GERRIETS

- Clivia dark black*
- 100% cotton*
- 600 gr/m2*

Masking curtains

- 3x H 2m x L 13m
- 3x H 3m x L 13m
- 1x H 4m x L 13m
- 1x H 3m x L 16m

Leg-style drops

- 6x H 8m x L 3m
- 6x H 8m x L 4m

1/2 backdrop

- 2x H 8m x L 8m

Backdrop

- 1x H 8m x L 14,40m

We have a set of pipes to fully equip the entirety of our black boxe

DANCE MARLEY

- HARLEQUIN duo / pro BLACK / WHITE
- 8 x 15m x 2m (Nbr x L x l)

TRUSS

- SIXTY 82 M29 L
- 10 x 0.5 m
- 10 x 1m
- 20x 2m - 44 x 3m

TRACK SYSTEME / TAB-TRACKS

- KING : 44ml
- TRUMPF : 105ml

The following equipment can be used if available when you arrive. It is shared between the two auditoriums of the Comédie de Genève

SQUARE TRUSS

- SIXTY 82 M29 S
- 12 x 0.5 m
- 20 x 1m
- 62 x 2m
- 20 x 3m
- 12 x square heavy base
- 16 x cube box corner

PIPES

- 10 x 0,25m
- 10 x 0.5 m
- 20 x 1m
- 30 x 2m - 30 x 3m

ACCESS EQUIPMENT

- 2x GENIE AWP30S 10 m
- 1x GENIE AWP40S 14 m

FLYING SYSTEM

- WAAGNER BIRO CAT V5

LIGHTING



DIMMERS

ADB EURODIM TWIN-TECH : 210x3KW and 30x5KW
Distributed across the stage and the auditorium.

CONTROL

ETC EOS GIO with Puck as master

NETWORK

SACN network with DMX distribution by Luminex.

LANTERNS

In order to save energy, we offer a suite of equipment made up entirely of LED lights. We try to use these light sources as a priority, but if it is impossible to adapt to them, our “conventional” suite of lights remains temporarily available.

The following equipment can be used if available when you arrive. It is shared between the two auditoriums of the Comédie de Genève

SOURCES LED

- 140x ETC SOURCE FOUR LED 2, with :
 - 70x lens tube zoom 15°-30°
 - 54x lens tube zoom 25°-50°
 - 27x fresnel lens mount 15°-50°
 - 10x lens tube 26° EDLT
 - 10x cyclight lens tube
- 10x ARRI FRESNEL L10-C RGBW 15°-50°
- 10x AYRTON GHIBLI 7° - 56°
- 32x JULIAT DALIS 860 LED CYCLIGHT 300W
- 6x ADB ALC-4/2 CYCLIGHT
- 8x CLAYPAKY B-EYE K25 4°-60°
- 6x CLAYPAKY B-EYE K15 4°-60°
- 4x CLAYPAKY K-EYE K20 HCR 7°-53°
- 26x ROBE T1 Profile 7°-49°
- 13x LDDE NANOPIX 1440

EFFECTS / MACHINES

- 2x MARTIN ATOMIC 3000 LED strobe machine
- 2x MDG ATMOSPHERE hazer
- 2x LE MAITRE G300 smoke machine
- 1x ANTARI S-500 snow machine

FLUORESCENT TUBES

- 29x TUBE 36W JULIAT 744V

HMI/MSR LAMPS

- 1x FRESNEL 575W STRAND Sirio with electronic Pani shutter in T13
- 1x FRESNEL 2500W ARRI with Licht-Technik DARK VADER shutter
- 1x JULIAT BISON 2500W FRESNEL with JULIAT shutter
- 2x ARRI D40 4000W FRESNEL with Licht-Technik DARK VADER shutter
- 1x JULIAT 914 S 1200W SPOTLIGHT
- 2x JULIAT 933 SNX 2500W SPOTLIGHT
- 2x JULIAT 934 SNX 2500W SPOTLIGHT
- 1x MSR JULIAT VICTOR 1800W FOLLOWSPOT
- 3x VARILITE 575W VL1000 ERS AS

HALOGEN LAMP

- 80x PAR 64
- 6x FRESNEL 5KW
- Various PC 1KW and PC 2KW
- Various 1KW and 2KW profiler
- ACP1000 ADB CYCLIGHTS



SYSTEM

L.ACOUSTICS adjustable system

L-Acoustics L-ISA PROCESSOR II CE Processeur multicanal L-ISA MkII 32 sortie

Main PA :

- 5x X12 (Coaxiale 90°x 60° / 59Hz – 20 kHz / 2-way passive: 12” LF + 3”diaph. HF)

Surround :

- 6x X8 (Coaxiale 100° / 60Hz – 20 kHz / 2-way passive : 8” LF + 1.5”diaph. HF)

Extensions :

- 2x X8 (Coaxiale 100° / 60Hz – 20 kHz / 2-way passive : 8” LF + 1.5”diaph. HF)

Zenithal :

- 2x X8 (Coaxiale 100° / 60Hz – 20 kHz / 2-way passive : 8” LF + 1.5”diaph. HF)

Front Fill :

- 8x 5XT (Coaxiale 100° / 95Hz – 20 kHz / 2-way passive : 5” LF + 1”diaph. HF)

Amplification (Main PA) : L-Acoustics

- 5x LA4X V2 4x1000W 80hms
- 2x L-Acoustics LA2Xi CE Dedicated installation amplified controller 4x640 W / 40hms

REGIE

- 1x YAMAHA QL1
- 1x RIO 3224 D2
- 2x RIO 1608 D2

System Dante Primary + Secondary full redundancy

Note: Zactrack tracking system available on request in advance!

MICROPHONES

HF Main:

- HF Sennheiser Ew500 G4 + e965 (G Frequency Band)

Beltpack:

- HF Sennheiser Ew500 G4 + SK500 G4 (G Frequency Band)
- DPA 4061, beige & black

Range of dynamic and static microphones (please contact us).

INTERCOM

Wireless : Riedel Bolero System

MONITEURS

- 4x L-Acoustics X4i (Coaxiale 110° / 65Hz – 20 kHz / passive 2 voies : 4” LF + 1.4”diaph. HF)
- 6x L-Acoustics X12 (Coaxiale 90°x 60° / 59Hz – 20 kHz / passive 2 voies 12” LF + 3”diaph. HF)
- 2x L-Acoustics 12XT (Coaxiale 90° / 55Hz – 22 kHz / passive 2 voies 12” LF + 3”diaph. HF)
- 2x L-Acoustics X8 (Coaxiale 100° / 60Hz – 20 kHz / passive 2 voies : 8” LF + 1.5”diaph. HF)
- 2x L-Acoustics 5XT (Coaxiale 100° / 95Hz – 20 kHz / passive 2 voies : 5” LF + 1”diaph. HF)

Amplification (Monitoring) :

- 4x L-Acoustics LA4 X V2 4x1000W 80hms

WIRELESS FREQUENCY PLAN

CANAL	FREQUENCY (MHZ)	ID
1	566.200	10.102.217
2	566.600	10.102.218
3	567.200	10.102.219
4	568.000	10.102.220
5	569.200	10.102.221
6	571.600	10.102.222
7	573.800	10.102.223
8	572.900	10.102.224

**NETWORK AND IT**

R3G-SDI network

3G-SDI matrixing BlackMagic Universal

VideoHub Mixer Live Atem Television

Studio Pro HD

Windows 10 PC available

- Intel Xeon W2125 4.00GHz
- 64Gb 1333MHz
- 2 x Nvidia Quatro P4000
- Moniteur 32" 4K

BUILT IN EQUIPMENT

Panasonic PT-RZ12K (12 000 lum) front-facing projector and suite of lenses and sound proof casing.

Recording of a set security plan and for the archives of each performance: Sony PXW-Z150 front-facing camera in the center of the control booth.

A FullHD recorder can be provided on demand.

Stage relay monitors :

- Mobile monitor for the stage manager
- Relay to the performers' waiting area next to the auditorium and the changing rooms

EXTRA EQUIPMENT

The following equipment is provided if available upon your arrival.

Suite of Panasonic Laser video projectors with the following lenses :

- PT-RCQ10 (10000lum)
- PT-RZ660BA (6000lum)
- PT-RZ570B (5000lum)
- PT-RZ570E (5000lum)

Front-facing projection screens :

- Stumpfl 400 x 300
- Stumpfl 750 x 431

Live Atem TV Studio HD Mixers

Variety of converters:

BlackMagic – DataVideo – Aja

System for Windows PC

Software : Madmapper , Isadora , Qlab, Suite Adobe

Cameras :

- Sony PXW-Z190
- Tripod and gimbal

Various monitors

NETWORK



Our stage network is based on the Luminex network and managed with the Araneo software

Static guest IPs :

**Flexible Auditorium
10.102.100.0-254 /16**

LIGHTING

Luminex DMX nodes

SACN network management by Luminode Monitor software

Access to machines is available on these networks via protected wifi :

Hidden SSID, IP address white list

SOUND

Cisco switches for the Dante network

Dante network management by Dante Domain Manager.

Unless there is a good reason to do otherwise, internet access is via the administration ethernet network or the Guest or Pro wifi.



© Régis Golay

OTHER INFORMATION



TECHINICAL SCHEDULE

Morning :	09h – 13h
Lunch break :	13h – 14h
Afternoon :	14h – 18h
Evening break :	18h – 19h
Evening :	19h – 23h

These hours can be altered as long as a request is made and has been approved by the Technical Director.

Our staff is subject to Swiss labour law.

(artos_plaquette_tt_theatres_181128_web.pdf (artos-net.ch))

EQUIPMENT FOR STAFF

All staff taking part in setting up and breaking down must wear safety shoes and gloves.

ARTISTS

Access to dressing rooms on upper floors is via... They can be accessed by stairs and by lift.

There is an adjoining waiting room with toilets and a shower specifically for the room.

DRESSING ROOMS AND EQUIPMENT

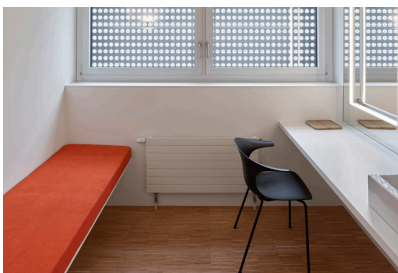
Individual dressing rooms floor 4- 8 individual furnished dressing rooms (day bed, mirror, hanging space, shower, sink) 1 dressing room with disabled access.

Shared dressing rooms floor 3 - 4 8-person furnished dressing rooms (armchairs, mirrors, clothes rails, shower, toilet).

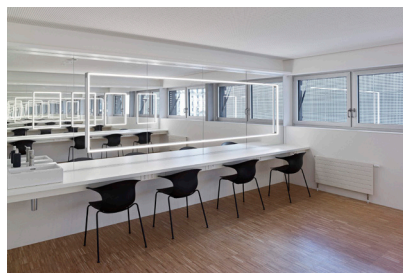
Make-up room floor 4- 2 rooms each for 5 people

CATERING AREA

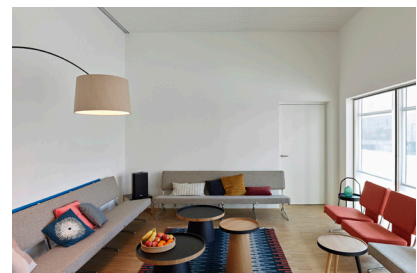
Furnished kitchen (microwave, dishwasher, coffee machine, teapot) 10-person table. Outside balcony space for smokers.



© Régis Golay



© Régis Golay



© Régis Golay